

C3 (1968 to 1979) “head flopping” chrome mirror repair

2 different chrome mirrors used during this period. 1968-74 large head mirror with glass measuring 3 9/16 x 5” and 1975-79 wide head mirror with glass measuring 3 3/8 x 6” - Rivets: flat-head for ‘69 and round-head for ‘77 Mirror examples pictured are GM3914529 (1969) and GM3913063 (1977)

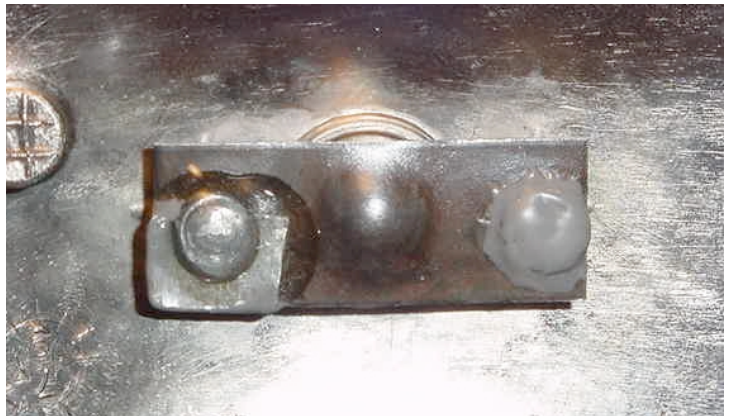
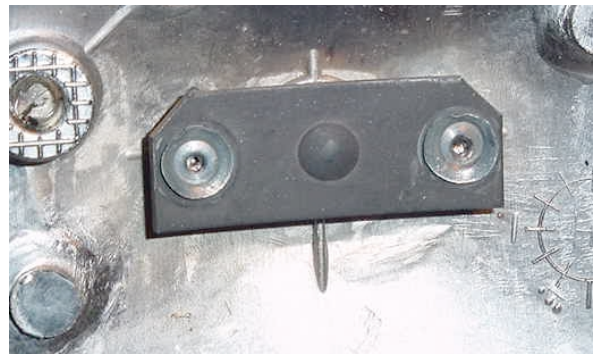
(One was already done before I started taking pictures)

Glass is dated J-AX-9 (October 1969) and 6-DMI-7 (June 1977)

1. Soak mirror in gasoline for 24 hours. It is important to put enough to completely cover the whole head. This allows the gasoline to penetrate to the silicone. (keep it outside and covered - paint thinner may also be used) I use heavy duty aluminum foil in a plastic dishpan for soaking.



2. After the glass has loosened, it will fall away. If not, very carefully pull it away from the housing. If the glass won't come free, let it soak some more.



3. After removing the glass, clean off the silicone residue from the back of the glass and from the 4 mounting pods on the housing. Also, clean off the plate and rivets that hold the mirror post ball in place. This area needs to be completely clean.

(at this stage, some have used a ball peen hammer to hammer the rivet into place and a center punch to expand and tighten down the rivet. This may not work, and if it does, it may only be a temporary fix ...)



4. Fashion a “shim” from some spare sheet metal. The open end in the “shim” should be approximately the width of one of the rivets. The bottom opening in the “shim” should be slightly wider than the open end. With a pair of pliers, insert the shim between the head of the rivet and the plate. After you get it started, use a small hammer to finish securing the shim. When it’s all the way inserted, use a pair of needle nose pliers to pinch the open ends of the shim together. This will seat the shim.

5. When seated, cut the excess from the shim. Use JBWeld around the edge of the shim and the rivet head and let the JBWeld cure for at least 48 hours. After curing, add a high strength epoxy over



the entire shim and rivet area. Give the epoxy a couple days to cure. This may be overkill, but you sure don't want to do this again in your lifetime. If you've never used JBWeld (the longer it cures, the stronger the bond), there are only 2 rules to remember ...

Rule 1: be PATIENT !!

Rule 2: if you're not patient, see Rule 1.

(Before the next step begins, it's a good time to clean & chrome polish around the edges of the mirror housing before the glass is reinstalled)



6. After the JBWeld and Epoxy have completely cured, apply a RTV primer (Locktite or Permatex brand) to both glass and the 4 housing posts where contact will be made. Then apply a good bead of RTV to each of the 4 posts and press the mirror glass into place. Put a thick, clean rag

on the glass, add a little weight and allow it to cure for at least 24 hours.

Note: pictures show 1 of each mirror - the '75-79 mirror (right) having a cured shim in place ... and, a before-during-and-after with the '68-74 mirror.

5 minutes to get the mirror housing soaking in gasoline

24 hours soaking in gasoline

20 minutes to clean up, install the shim and the JBWeld

48 hours to allow JBWeld to cure

5 minutes to mix and apply the Epoxy cement

48 hours to allow Epoxy cement to cure

20 minutes to clean and chrome polish the housing

10 minutes to prime and apply the RTV

24 hours to allow the RTV to cure

Total time to repair a mirror 1 hour work, 6 days waiting

